



Station Approach, Epping, CM16

BUTLER  STAG



Located in the heart of Theydon Bois village is this fantastic two double bedroom apartment close to Theydon Bois Station (Central Line).



- Modern Gated Development
- Two Bedrooms/ Two Bathrooms
- Close To Station & Amenities
- Secure Allocated Parking
- Unfurnished
- Private Terrace

Positioned on the ground floor of a modern purpose built gated development, the property is in good decorative order throughout and offers over 730 sq ft of space, including a spacious open-plan kitchen reception, two double bedrooms, master with en-suite bathroom with ample storage in both and a smart three piece shower room. There is also an added bonus of an allocated gated parking space, accessed via remote controlled security gates and private terrace that runs the full length of the property.

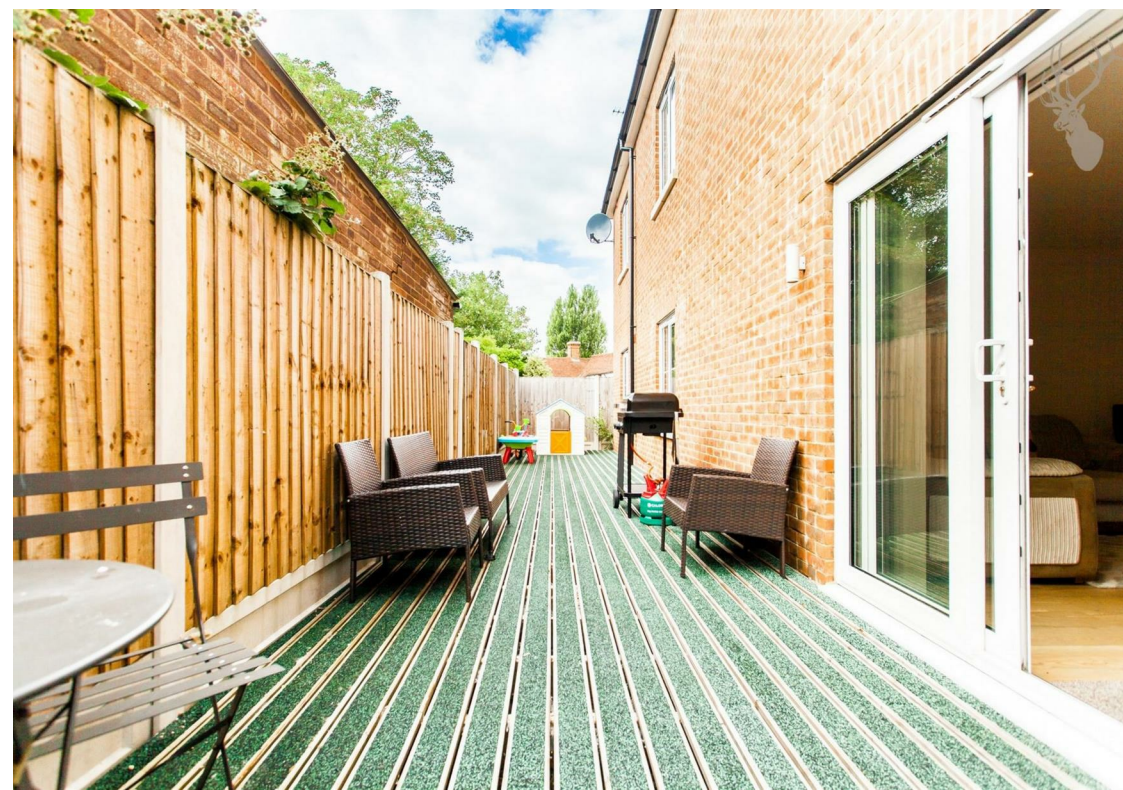
It is rare to find properties so well proportioned, the bedrooms are generous doubles and with two bathrooms this property is ideal for a professional couple.

The location is superb, less than a minutes stroll to the station and village where a variety of amenities are at hand including shops, pubs, restaurants, village green and duck pond.

Available June Unfurnished.

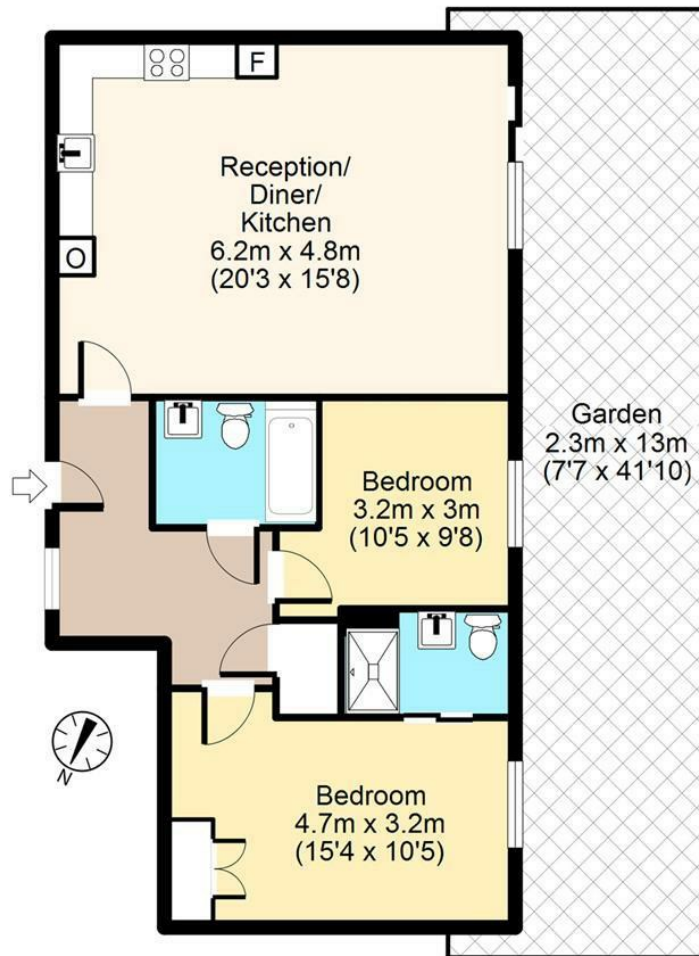
Council Tax Band - E





Station Approach, CM16

Ground Floor



Total area: approx. 68 sq. metres (732 sq. feet)

For illustration purposes only - not to scale

www.londonpropertyassessments.co.uk

BUTLER & STAG

☎ 01992 667666

🏠 4 Forest Drive, Theydon Bois, Essex, CM16 7EY

✉ theydon@butlerandstag.com

www.butlerandstag.uk

IMPORTANT NOTICE - These particulars have been prepared in good faith and they are not intended to constitute part of an offer or contract. We have not performed a structural survey on this property and the services, appliances and specific fittings have not been tested. All photographs, measurements, floor plans and distances referred to are given as a guide and should not be relied upon.